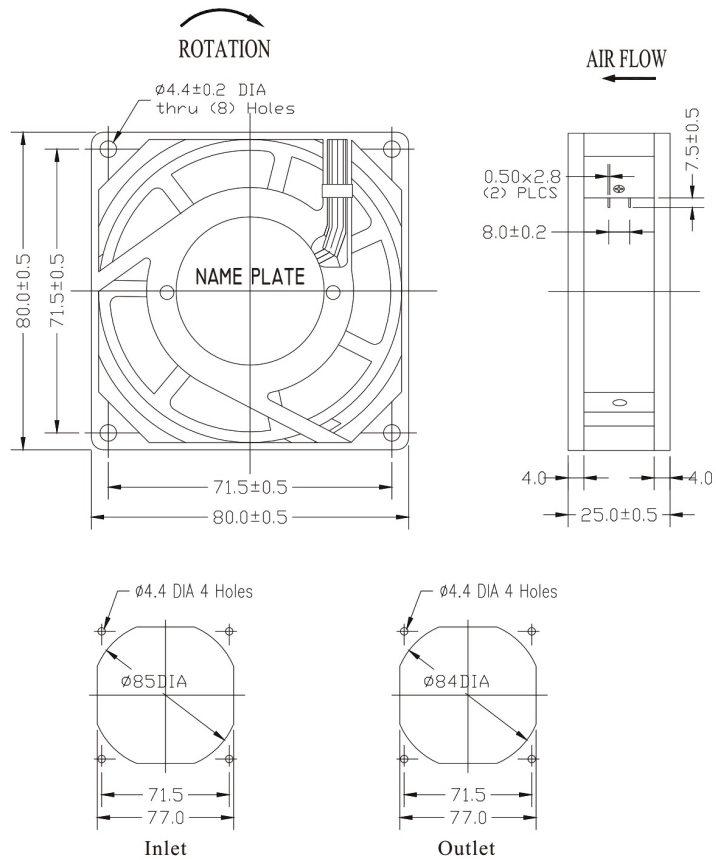


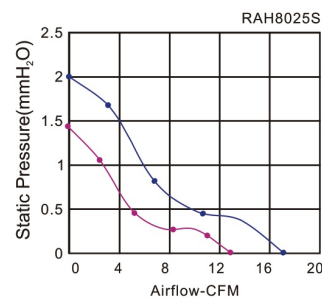
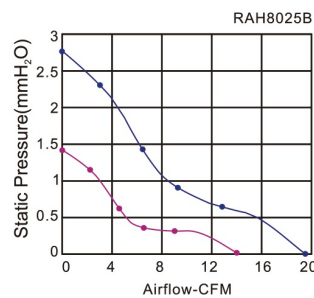
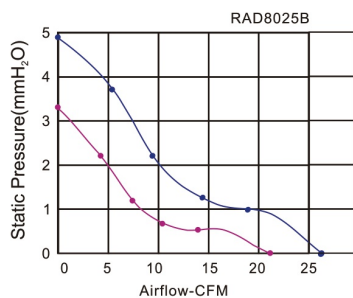
Axial Fan 80 x 80 x 25 mm



Size: 80mmx80mmx25mm
Airflow: 22~46m³/hr
 13~27CFM
Weight: 208g
Noise: 20~35dBA
Impeller: PA6 UL94V-0 Reinforced Plastic
Frame: Aluminum Alloy
Terminals: 0.5mm
Lead Wire: AWG#22 UL 1430
 (Optional)
Motor: Shaded Pole Induction Motor
Safety: UL.CUL.TUV.CE
Operation Temperature: -10°C~+70°C

Unit:mm

Model	Bearing System	Voltage VAC	Freq. Hz	Current A	Power W	Speed RPM	Noise dBA	Air Flow		Static Pressure (mmH ₂ O)	Weight Gram
								M ³ /hr	CFM		
RAH8025S1	Sleeve	220~240	50/60	0.1	13/11	1600/2100	20/23	22/29	13/17	1.4/2.0	208
RAH8025S2		100~125	50/60	0.13	13/11	1600/2100	20/23	22/29	13/17	1.4/2.0	
RAD8025B1	Ball	220~240	50/60	0.1	13/11	2400/2900	30/35	37/46	22/27	3.3/4.9	
RAH8025B1		220~240	50/60	0.1	13/11	1700/2200	21/26	24/32	14/19	1.4/2.7	
RAD8025B2		100~125	50/60	0.13	13/11	2400/2900	30/35	37/46	22/27	3.3/4.9	
RAH8025B2		100~125	50/60	0.13	13/11	1700/2200	21/26	24/32	14/19	1.4/2.7	



Key
 — 60Hz
 — 50Hz