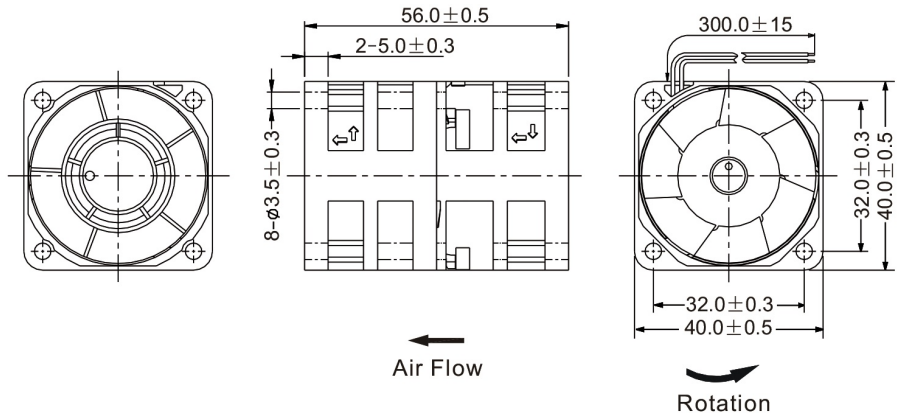
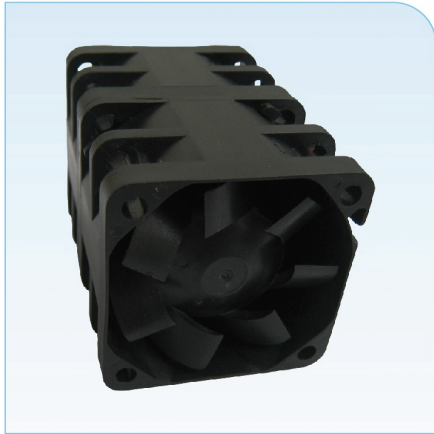


■ Dimensions Drawing



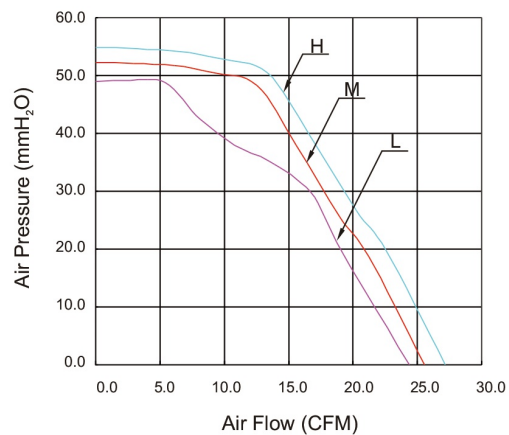
Unit: mm

General Specification:

- Frame and Impeller : Thermal Plastic , UL 94V-0
- Lead Wires : UL Type
(+) : Red (-) : Black
- Operation Temperature : -10°C ~ 70°C ,
35% ~ 85%RH
- Storage Temperature : -40°C ~ 80°C ,
35% ~ 85%RH



■ Performance Curves



Listed Model	Bearing System	Rated Voltage	Operation Voltage	Rated Current	Rated Speed	Air Flow	Air Pressure	Noise Level	Available Features (Optional)				Weight
		VDC	VDC	A	RPM	CFM	mmH ₂ O	dBA	Tachometer Output	Rotation Detector	Thermal Control	Pulse Width Modulation	g
RGH4056B1	Ball	12	6.0~13.8	1.20	16,500/14,000	27.1	54.8	63	•	•		•	90
RGM4056B1			6.0~13.8	1.00	16,500/11,000	25.5	52.3	62	•	•		•	
RGL4056B1			6.0~13.8	0.85	16,500/9,000	24.3	49.0	60	•	•		•	